

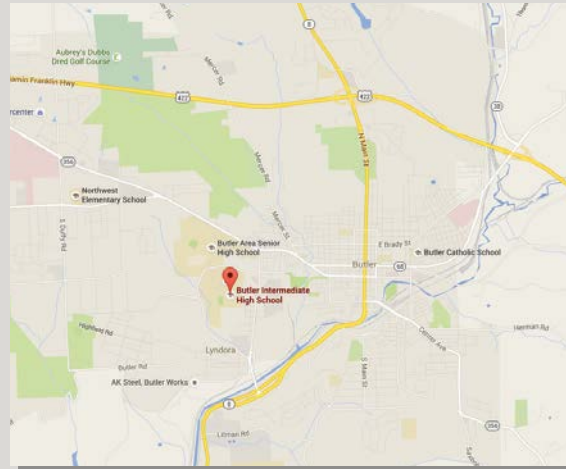
# BE THERE!

Arrive early for pre-concert talks at 6:30 pm



All performances are held at the  
**Butler Intermediate High School:**

551 Fairground Hill Rd, Butler, PA 16001



You are invited to become a member of the

## KEEP THE MUSIC PLAYING GIVING CLUB

Become a part of the Butler County Symphony Association and have the satisfaction of knowing that you are helping a valuable community resource!

For more information on levels of giving and memorial gifts,

**CONTACT US TODAY!**



724.283.1402  
info@butlersymphony.org  
259 South Main St., Butler, PA 16001  
butlersymphony.org



2017-2018 SEASON

# WORLDS APART

Current season ticket holders  
can renew their current seats  
beginning **Monday, June 5.**

Individual tickets will go on  
sale on **Monday, August 7.**

**Thank you for your  
continued support!**

www.butlersymphony.org

**SUBSCRIBE TODAY!**

butlersymphony.org | 724.283.1402



2017-2018 SEASON

# WORLDS APART

Great music is capable of transporting us to distant worlds. When we close our eyes during a performance, we allow the music to wash over us and captivate our senses. It is with this transformative experience in mind that I proudly welcome you to the Butler County Symphony's 2017-18 concert season, a season brimming with beautiful, powerful, and transcendent music. In addition to masterworks by Brahms, Mozart, Nielsen, and Gershwin, the BCSO also welcomes acclaimed guest artists, including the esteemed former concertmaster of the Pittsburgh Symphony, Andrés Cárdenes. We'll perform some of the most beloved songs that make up "The Great American Songbook." Together, we'll travel the cosmos when we present Gustav Holst's *The Planets* and many of

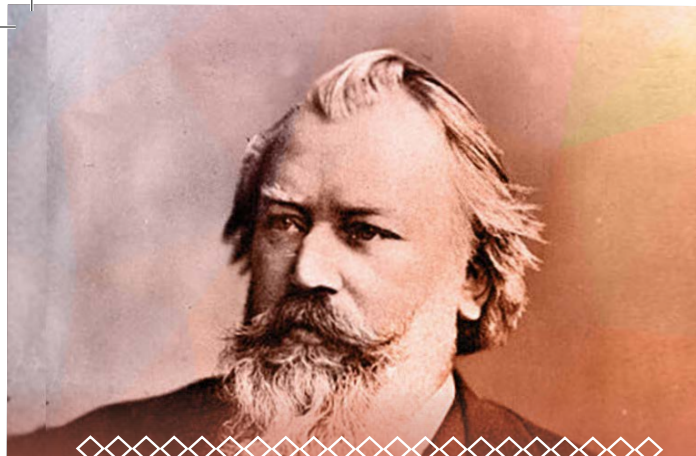


your favorite sci-fi motion picture film scores in concert. Finally, we close our 69<sup>th</sup> season by joining forces with the Slippery Rock University Concert Choir for one of classical music's most popular and engaging works, *Carmina Burana* by Carl Orff.

Your orchestra continues to grow in exciting and innovative ways. Our continued success would be not possible without the dedication of so many people, from our musicians and board to our patrons and supporters. Whether it is a classical, Pops, or Holiday performance, we look forward to welcoming all of you into the Butler County Symphony family this season.

Sincerely,

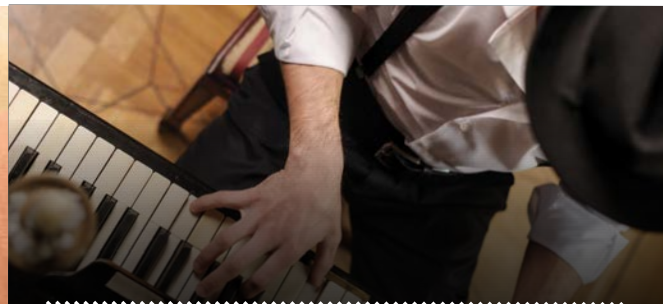
**MATTHEW KRAEMER**  
Music Director & Conductor



Saturday, October 7, 2017 at 7:30 pm  
Butler Intermediate High School

## ALL BRAHMS

**Matthew Kraemer**, conductor  
**Andrés Cárdenes**, violin  
**Marjorie Lange Hanna**, cello  
Brahms: Hungarian Dance No. 5  
Brahms: Double Concerto for Violin and Cello  
Brahms: Symphony No. 2



Saturday, November 4, 2017 at 7:30 pm  
Butler Intermediate High School

## THE GREAT AMERICAN SONGBOOK

**Matthew Kraemer**, conductor  
**2017 DeHaan Classical Fellow** (TBD)  
**Kate Amatuzzo**, vocalist  
**Patrick Thiem**, vocalist  
Selections include George Gershwin's *Rhapsody in Blue* and *Porgy and Bess*, and songs by legendary composers Cole Porter, Jerome Kern, Irving Berlin, Henry Mancini and Harold Arlen.



Saturday, December 2, 2017 at 7:30 pm  
Butler Intermediate High School

## HOLIDAY TRADITIONS

**Matthew Kraemer**, conductor  
**Butler & Seneca Valley High School Choirs**  
Bring the family and share your holiday season with us! Traditional Carols sprinkled with the music from *How the Grinch Stole Christmas* and *The Snowman*.



Saturday, February 3, 2018 at 7:30 pm  
Butler Intermediate High School

## THE PLANETS

**Matthew Kraemer**, conductor  
**Tom Mahovsky**, euphonium  
Nielsen: *Helios Overture*  
Stephen Barr: *Penumbra* (World Premiere)  
Holt: *The Planets*



Saturday, March 3, 2018 at 7:30 pm  
Butler Intermediate High School

## SCI-FI SPECTACULAR

**Matthew Kraemer**, conductor  
Selections include *Star Trek Into Darkness*, *Star Wars The Force Awakens*, *Aliens*, *Close Encounters of the Third Kind*, *Back to the Future*, and much more.



000000 000000 000000 000000 000000 000000 000000

Saturday, April 14, 2018 at 7:30 pm  
Butler Intermediate High School

## CARMINA BURANA

**Matthew Kraemer**, conductor  
**Slippery Rock University Concert Choir**  
**Dr. Stephen Barr**, director  
Mozart: *Magic Flute Overture*  
Young Artist Competition Winner (TBD)  
Orff: *Carmina Burana*

## 2017-2018 SEASON SUBSCRIBE TODAY!

To retain your seats, fill-out this form and return to the Butler County Symphony office with payment. **Single tickets go on sale August 7, 2017.**

I would like to subscribe to the entire 2017-18 season.

NAME: \_\_\_\_\_  
STREET: \_\_\_\_\_  
CITY: \_\_\_\_\_ STATE: \_\_\_\_\_ ZIP: \_\_\_\_\_  
PHONE: \_\_\_\_\_  
EMAIL: \_\_\_\_\_

### SEAT SELECTION

SECTION: \_\_\_\_\_ ROW: \_\_\_\_\_ SEAT: \_\_\_\_\_

### PRICING & PAYMENT INFORMATION

QTY. OF SUBSCRIPTIONS:	X \$103 [PRICE] =	\$
DONATION: Minimum \$10/person for program listing. More information regarding donation levels for the "Keep The Music Playing" Giving Club can be found by visiting <a href="http://butlersymphony.org">butlersymphony.org</a> .		\$
TOTAL ENCLOSED:		\$

### PAYMENT TYPE:

CHECK  VISA  MASTERCARD  AMEX

CARD NUMBER: \_\_\_\_\_  
EXP: \_\_\_\_\_ CVV: \_\_\_\_\_  
SIGNATURE: \_\_\_\_\_

### MAIL OR RETURN THIS FORM TO:

**Butler County Symphony Association**  
259 South Main St., Butler, PA 16001